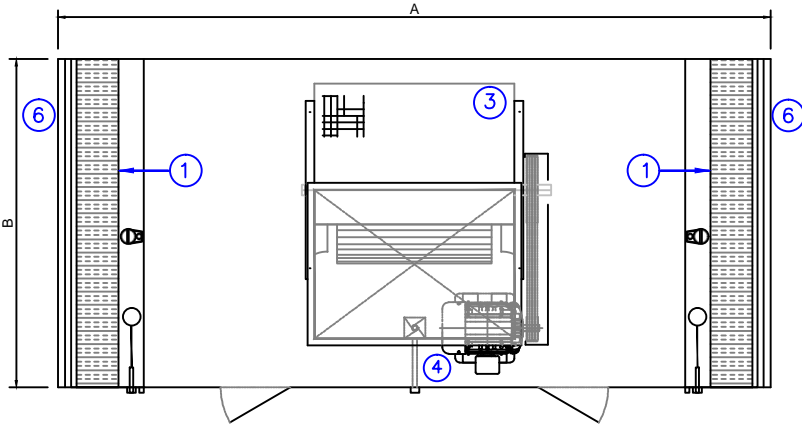
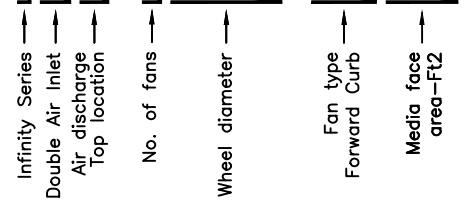


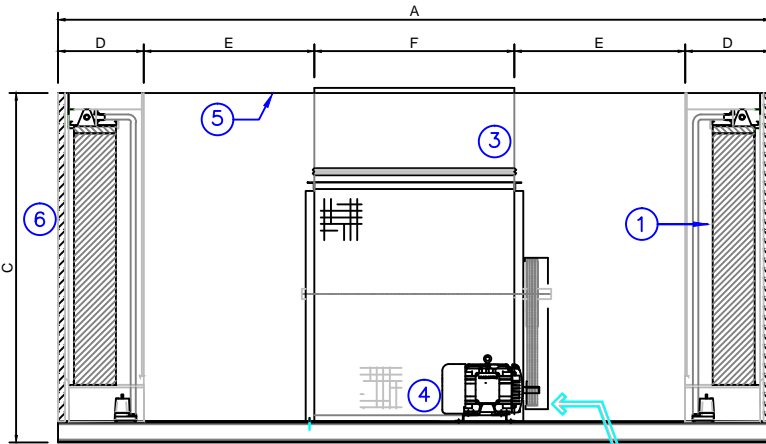
EVAPORATIVE COOLING SYSTEMS

INFINITY SERIES

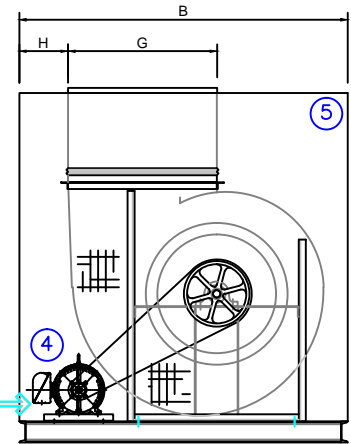
IDT-1XXX-AFXX



INTERNAL PLAN VIEW



FRONT ELEVATION



SIDE CROSS SECTION

OPTIONAL SEISMIC VIBRATION ISOLATORS (NOT SHOWN)

| MODEL | Std. CFM | ISP" | ESP" | TSP" | BHP/HP | A | B | C | D | E | F | G | H |
|-----------------|----------|------|------|------|------------|--------|---------|-------------|---------|---------|---------|---------|---------|
| IDT-1 40 AF 94 | 45,000 | 0.35 | 0.70 | 1.05 | 17.57 / 20 | 17'-0" | 7'-10" | 8'- 4" | 24 1/2" | 48 7/8" | 57 1/4" | 42 3/4" | 14" |
| IDT-1 44 AF 94 | 45,000 | 0.35 | 0.70 | 1.05 | 14.29 / 15 | 18'-0" | 7'-10" | 8'- 4" | 24 1/2" | 51 7/8" | 63 1/4" | 47 1/4" | 6 1/2" |
| IDT-1 44 AF 100 | 50,000 | 0.35 | 0.70 | 1.05 | 17.59 / 20 | 18'-0" | 8'- 4" | 8'- 4" | 24 1/2" | 51 7/8" | 63 1/4" | 47 1/4" | 12" |
| IDT-1 44 AF 108 | 55,000 | 0.35 | 0.70 | 1.05 | 21.46 / 25 | 18'-0" | 9'- 0" | 8'- 4" | 24 1/2" | 51 7/8" | 63 1/4" | 47 1/4" | 14" |
| IDT-1 49 AF 108 | 55,000 | 0.35 | 0.70 | 1.05 | 17.59 / 20 | 18'-6" | 9'- 0" | 8'-11" | 24 1/2" | 51 3/4" | 69 1/2" | 52 1/4" | 11" |
| IDT-1 44 AF 118 | 60,000 | 0.35 | 0.70 | 1.05 | 25.99 / 30 | 18'-6" | 9'- 10" | 8'- 4" | 24 1/2" | 51 7/8" | 63 1/4" | 47 1/4" | 14" |
| IDT-1 49 AF 118 | 60,000 | 0.35 | 0.70 | 1.05 | 20.89 / 25 | 18'-6" | 9'- 10" | 9'- 6" | 24 1/2" | 51 3/4" | 69 1/2" | 52 1/4" | 14" |
| IDT-1 49 AF 138 | 65,000 | 0.35 | 0.70 | 1.05 | 24.65 / 25 | 18'-6" | 9'- 10" | 9'- 6" | 24 1/2" | 51 3/4" | 69 1/2" | 52 1/4" | 14" |
| IDT-1 54 AF 138 | 70,000 | 0.35 | 0.70 | 1.05 | 23.20 / 25 | 19'-0" | 9'- 10" | 9'- 10 1/2" | 24 1/2" | 51" | 77" | 57 3/8" | 12 1/2" |
| IDT-1 54 AF 157 | 75,000 | 0.35 | 0.70 | 1.05 | 26.64 / 30 | 19'-0" | 9'- 10" | 10'- 4" | 24 1/2" | 51" | 77" | 57 3/8" | 12 1/2" |
| IDT-1 54 AF 157 | 80,000 | 0.35 | 0.70 | 1.05 | 30.47 / 40 | 19'-0" | 9'- 10" | 10'- 4" | 24 1/2" | 51" | 77" | 57 3/8" | 12 1/2" |



BARNHART-TAYLOR, INC.
 AIR HANDLING AND
 EVAPORATIVE COOLING SYSTEMS
INFINITY SERIES
 EVAPORATIVE COOLERS

IDT SERIES UNITS—GENERAL LAYOUT

NOTES:

- 1- BLOWER AMCA CLASS I OR CLASS II, AIRFOIL WHEEL, PERMATECTOR COATED.
- 2- CONTACT US FOR DIFFERENT EXTERNAL STATIC PRESSURE (ESP) FOR MOTOR SELECTIONS.
- 3- DRAWING NOT FOR CONSTRUCTION PURPOSES
- 4- BHP INCLUDES BELT LOSSES

| ITEM | QTY | DESCRIPTION |
|------|--------|---|
| 1 | 2 sets | EVAPORATIVE COOLING MEDIA MUNTERS CELDEK 12" THICK |
| 2 | 2 | CIRCULATION PUMPS: LITTLE GIANT WGP |
| 3 | 1 | SUPPLY FAN; GREENHECK DWDI AIRFOIL |
| 4 | 1 | PREMIUM EFFICIENCY MOTOR 230V / 460V / 3ø / 60HZ TEFC |
| 5 | 1 | FAN CASING - GALVANNEAL SHEET METAL GAUGE 18 |
| 6 | 1 | 2" DEEP LOUVERS - GALVANNEAL SHEET METAL |

DRAWING No:

IUS-10022-R2

DATE: 11/15/2012