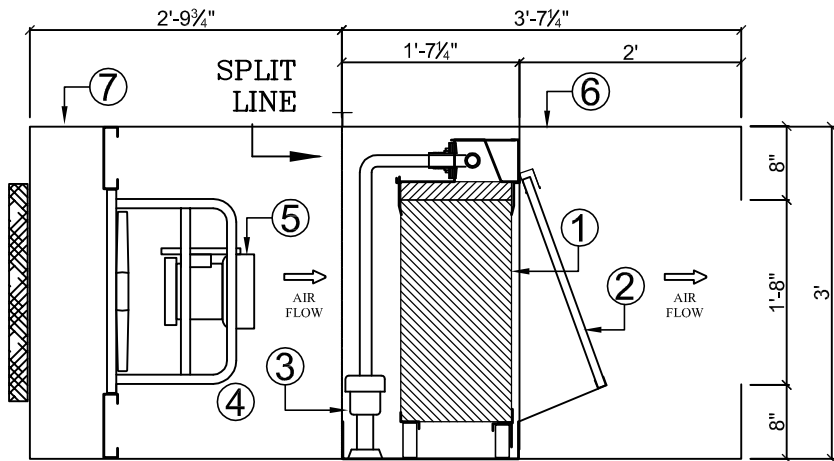
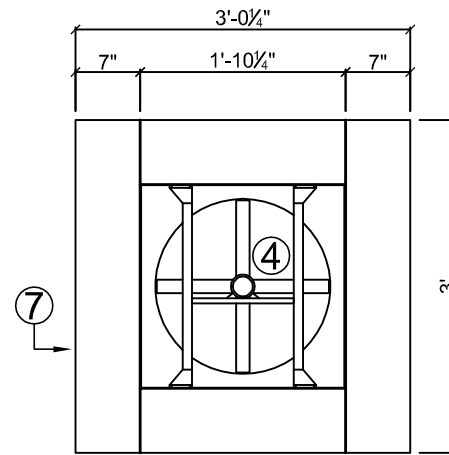


INTERNAL PLAN VIEW



ELEVATION THROUGH UNIT



ELEVATION - FAN AND MOTOR

ITEM	QTY.	DESCRIPTION
1	1 set	Munters Celdek Media 12" depth, 24" width, 36" high. (5 sq. ft.)
2	1	Aluminum Moisture Eliminator Filter
3	1	Circulating pump: Little Giant Pump CP 15000, 115v/1Ø, 1.5 Amps.
4	1	Sidewall Direct Drive Supply Fan: Greenheck Model SS1-16-428
5	1	Motor: Supply Fan 3/4 H.P., 230v/ 1Ø/ 60 Hz.
6	1 set	Plumbing: 3/8"Ø supply, 1"Ø Overflow, 1"Ø Drain
7	1	Fan Casing: 20 gauge, A-60 galvanized sheet metal
8	1	Air Washer Casing: 20 gauge, 304 stainless steel
9	2	Access Doors



BARNHART-TAYLOR, INC.
AIR HANDLING AND EVAPORATIVE COOLING SYSTEMS

NAUTICA SERIES EVAPORATIVE COOLERS

PROJECT: BT CONFERENCE AREA

CLIENT: BARNHART TAYLOR

QUANTITY: 1 UNIT

SYMBOL: PENDING

DATE: MARCH 09, 2012

CFM: 1,600/ 3,100

MODEL DESCRIPTION:

NSS-116SP-06

Nautica	Single Air Inlet	Side discharge	No. of blowers	Blower diameter	Propeller Fan	Media face area-F12
---------	------------------	----------------	----------------	-----------------	---------------	---------------------

SCALE: NONE

DWG. No: I 10120

DWG. By: ARQ. JOSÉ I. GUTIÉRREZ